

ALUMINUM STAIRS, SOURCED FROM KARNEL INCORPORATED

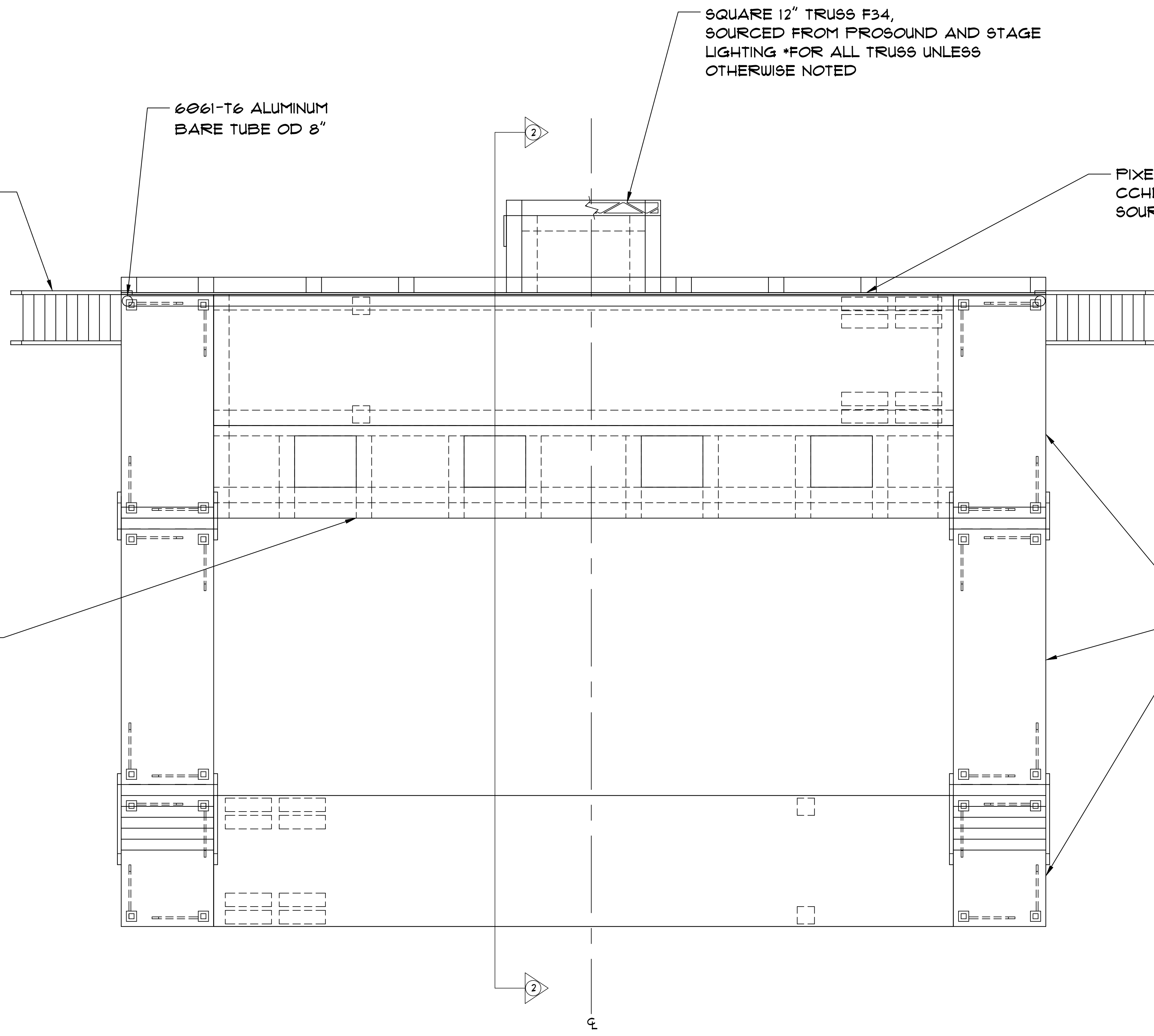
6061-T6 ALUMINUM BARE TUBE OD 8"


SQUARE 12" TRUSS F34, SOURCED FROM PROSOUND AND STAGE LIGHTING *FOR ALL TRUSS UNLESS OTHERWISE NOTED

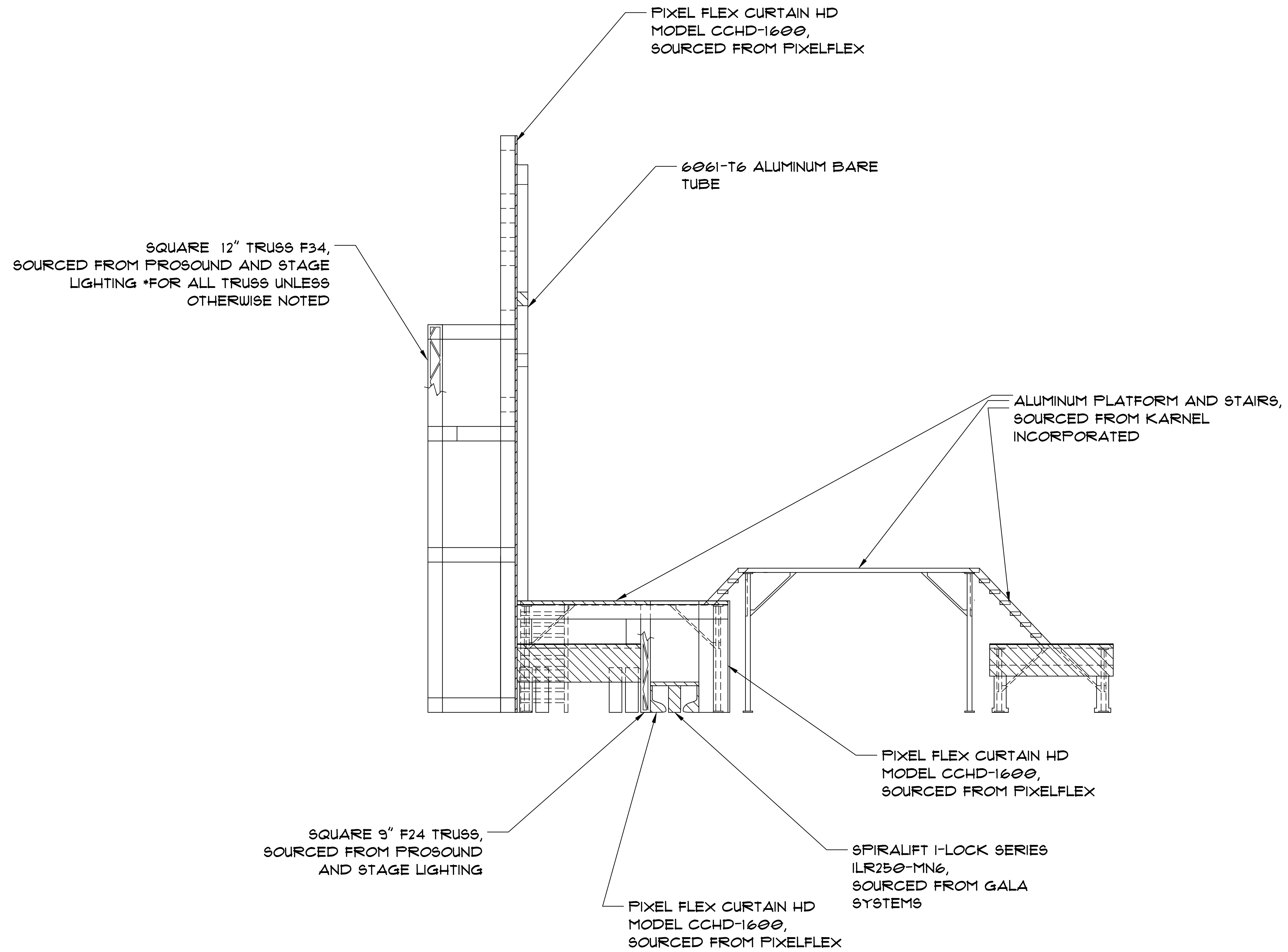
PIXEL FLEX CURTAIN HD MODEL CCHD-1600, SOURCED FROM PIXELFLEX

BUILD-OUT FROM TRUCK, CONTAINS LIFTS

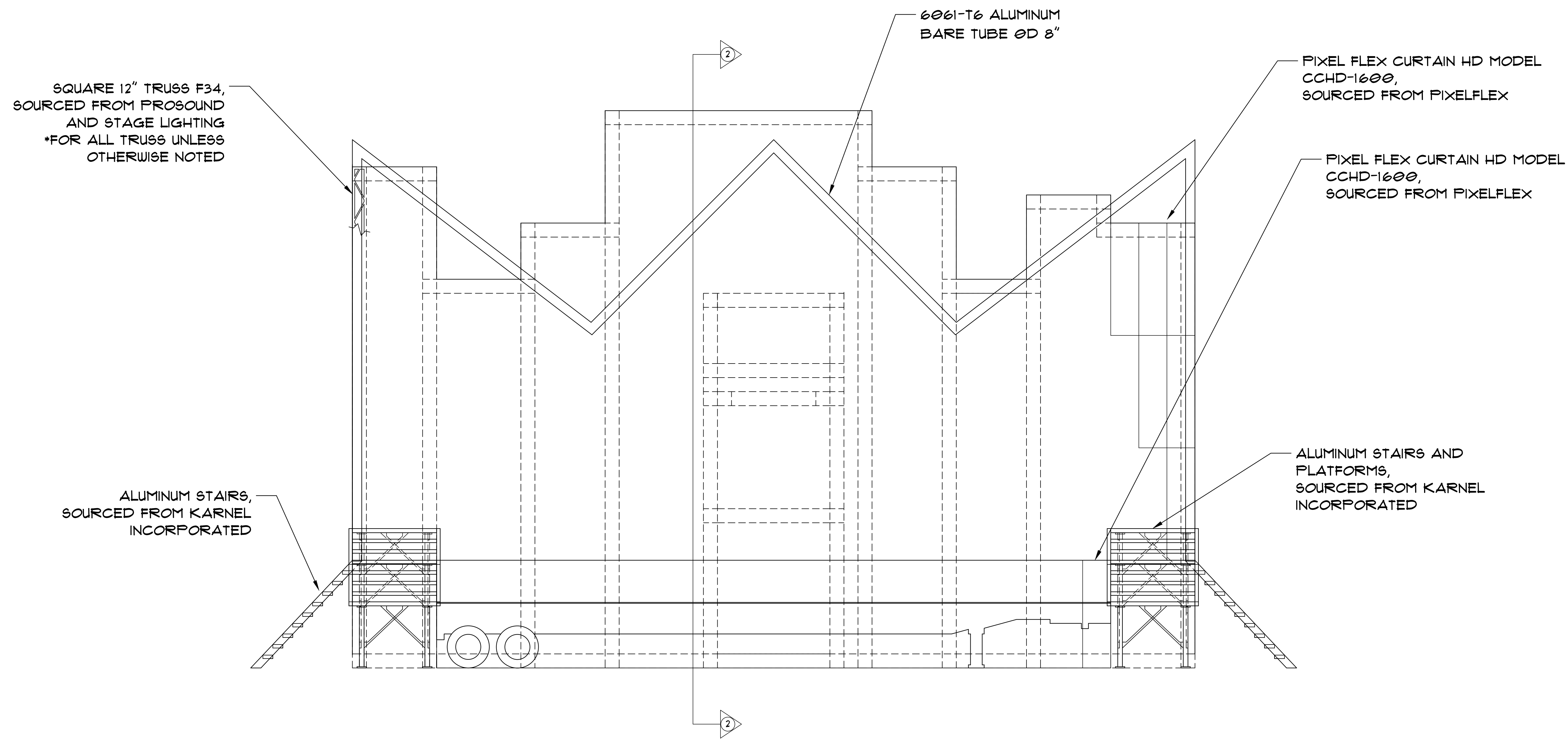
ALUMINUM PLATFORMS AND STAIRS, SOURCED FROM KARNEL INCORPORATED



 OTHELLO THE REMIX		1
PRODUCTION: OTHELLO: THE REMIX	PLATE 1 OF 5	
SCENIC DESIGN BY: TAYLOR FRITH-BROWN	DRAWN BY: TCFB	PLATE: GROUND PLAN
SCALE: 1/4" = 1'-0"	DATE: 14 MAR. 2016	REVISION: 14 MAR. 2016



		<div style="border: 1px solid black; border-radius: 50%; width: 30px; height: 30px; display: flex; align-items: center; justify-content: center;">2</div>
<small>PRODUCTION</small> OTHELLO: THE REMIX		<small>PLATE</small> 2 OF 5
<small>SCENIC DESIGN BY</small> TAYLOR FRITH-BROWN	<small>DRAWN BY</small> TCFB	<small>PLATE</small> SECTION
<small>SCALE</small> 1/4" = 1'-0"	<small>DATE</small> 14 MAR. 2016	<small>REVISION</small> 14 MAR. 2016

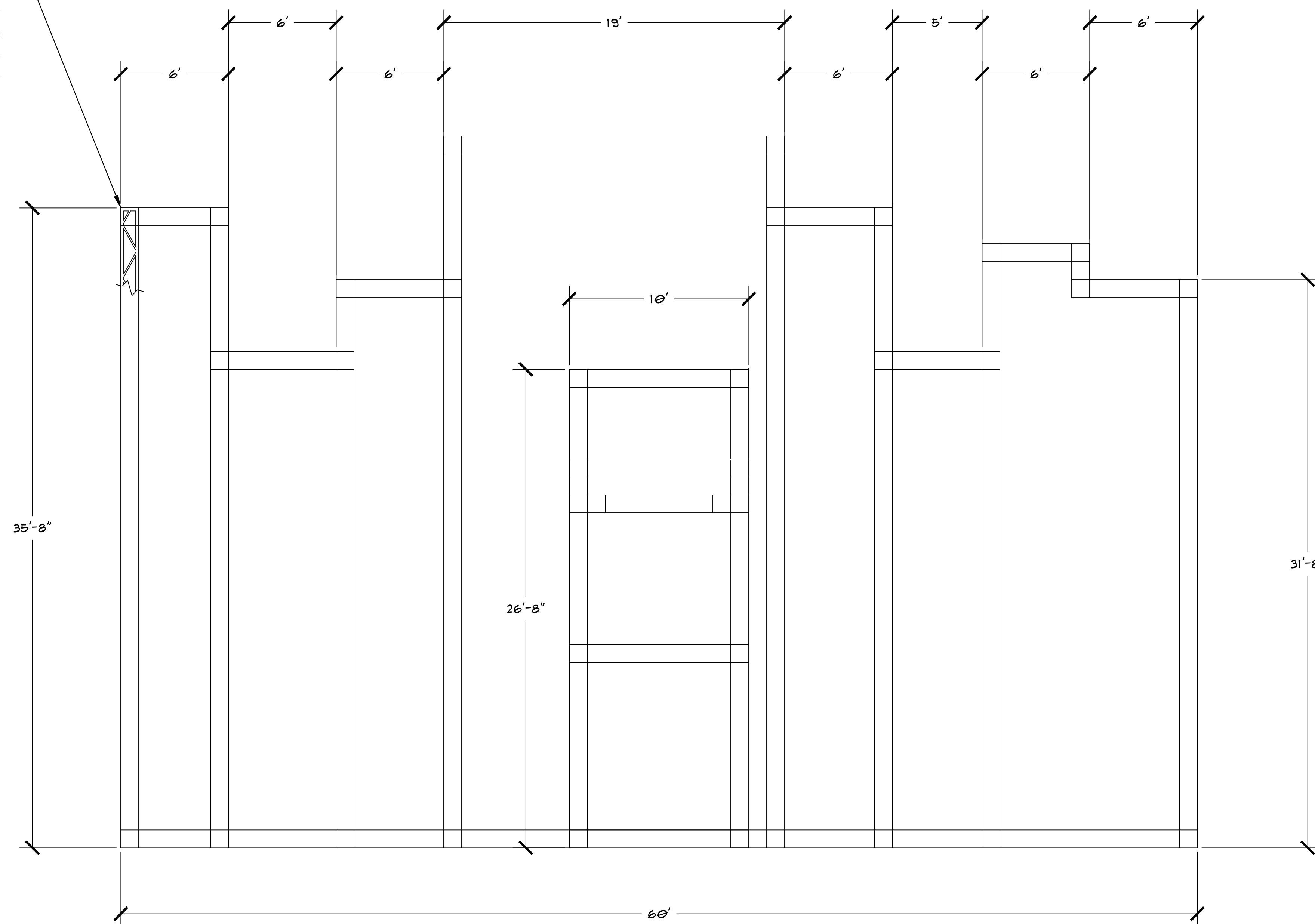


OTHELLO
THE REMIX

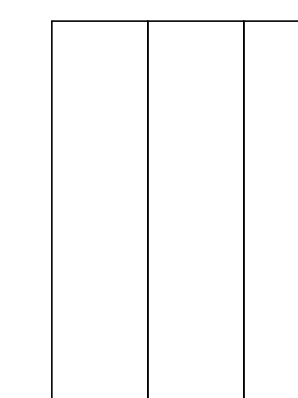
3

PRODUCTION: OTHELLO: THE REMIX	PLATE 3 OF 5
SCENIC DESIGN BY: TAYLOR FRITH-BROWN	DRAWN BY: TCFB
SCALE 1/4" = 1'-0"	DATE 14 MAR. 2016
	REVISION 14 MAR. 2016

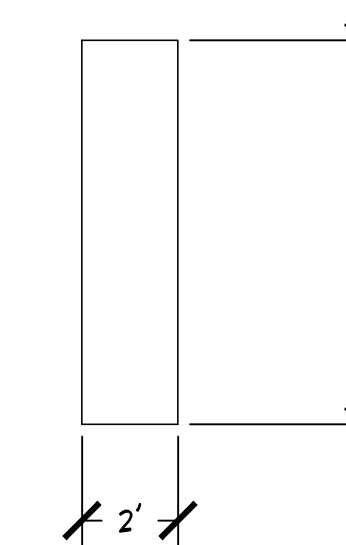
SQUARE 12" TRUSS F34,
 SOURCED FROM PROSOUND
 AND STAGE LIGHTING
 *FOR ALL TRUSS UNLESS
 OTHERWISE NOTED



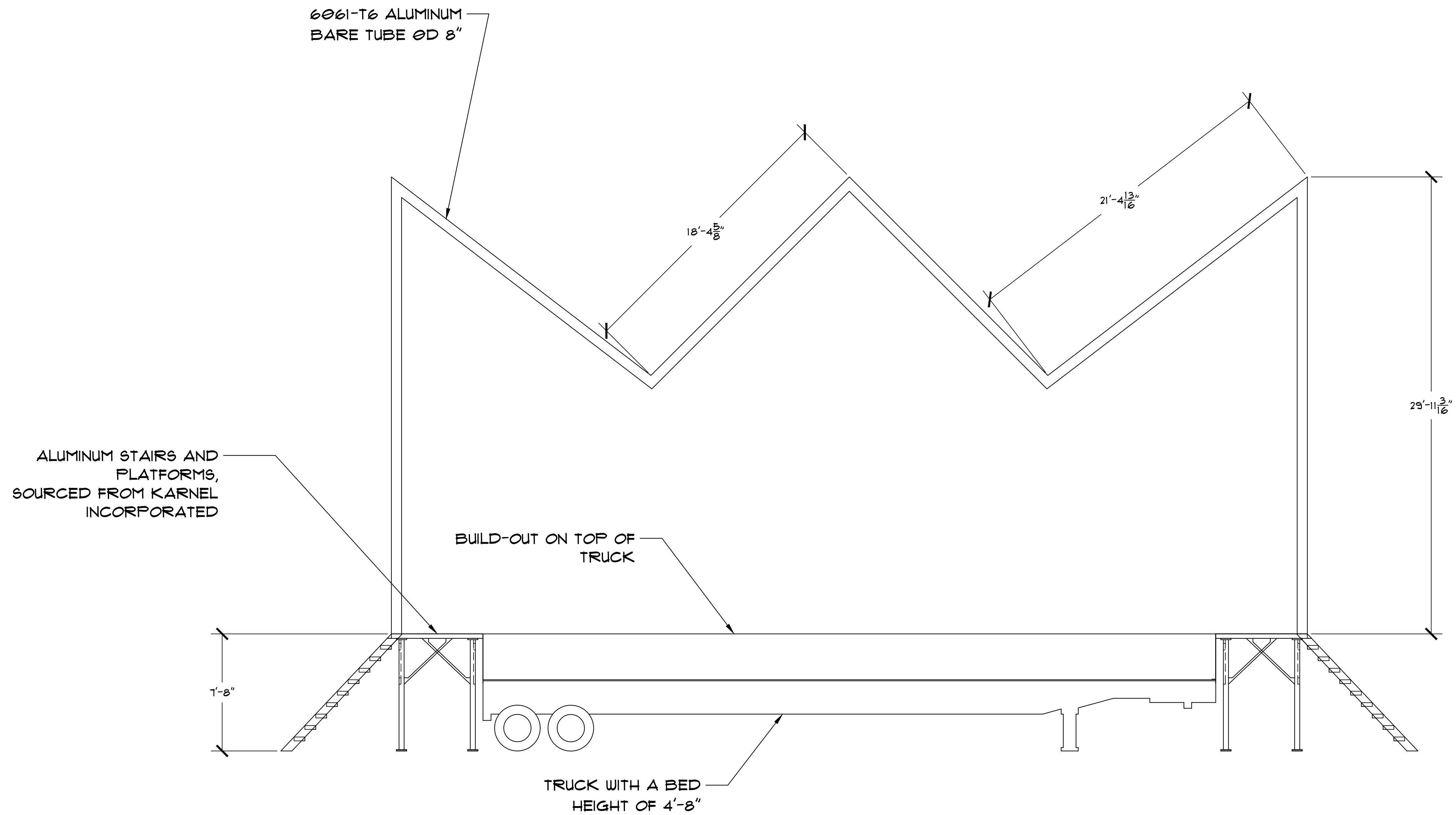
PIXEL FLEX CURTAIN
 HD MODEL CCHD-1600
 EACH CURTAIN UNIT CONNECTS TO
 CREATE LED SCREEN





INDIVIDUAL CURTAIN UNIT



PRODUCTION OTHELLO: THE REMIX		PLATE 4 OF 5
SCENE DESIGN BY TAYLOR FRITH-BROWN	DRAWN BY TCFB	PLATE DETAIL 1
SCALE 1/4" = 1'-0"	DATE 14 MAR. 2016	REVISION 14 MAR. 2016



 OTHELLO THE REMIX		
PRODUCTION OTHELLO: THE REMIX		PLATE 5 OF 5
SCENE DESIGN BY TAYLOR FRITH-BROWN	DRAWN BY TCFB	PLATE DETAIL 2
SCALE 1/4" = 1'-0"	DATE 14 MAR. 2016	REVISION 14 MAR. 2016